



# EMAAN

---



Detect



Analyze



Protect

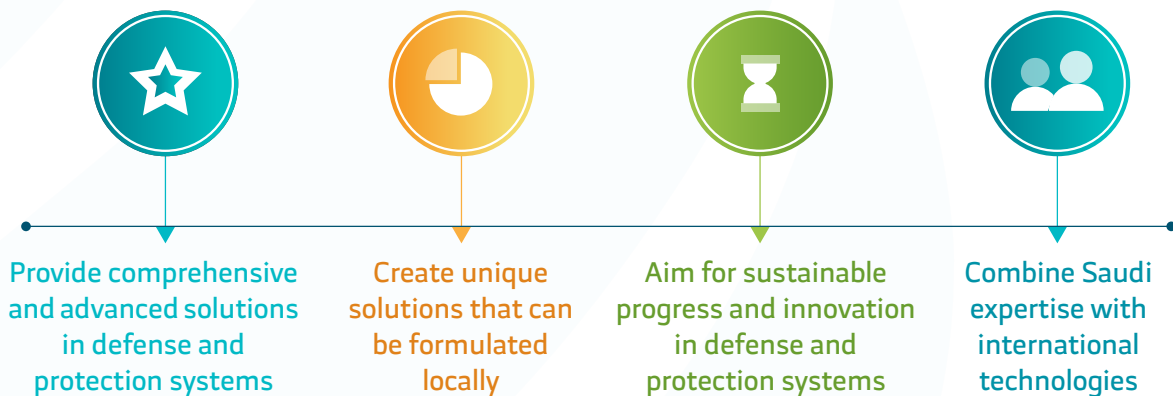
## About Us

We are a Saudi national company specialized in defense and protection systems for both the military and civil sectors. Our focus is to provide integrated and advanced solutions that meet the requirements of our valued partners. By analyzing the latest developments in defense and protection systems, we are able to apply cutting-edge technology and innovation to our work effectively. Being a national Saudi company, we take immense pride in our talented and professional staff who consistently contribute their expertise and capabilities to drive our continued success. Our uniqueness lies in our ability to effectively harness and deploy national resources towards achieving our goals and vision.

## Mission

To become a global leader that provides advanced and sustainable solutions for defense and protection systems.

## Vision



## Objectives



## Core Values



## Certifications and Licenses







**SOLUTIONS**



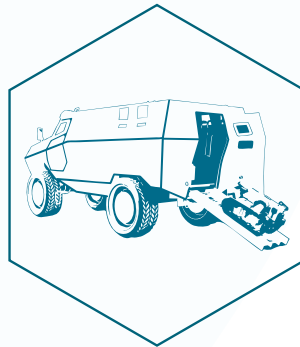
**Environmental  
Monitoring  
Vehicle**



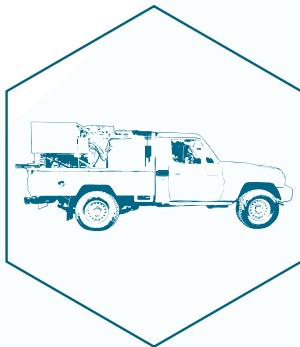
**Reconnaissance  
Vehicle**



**Decontamination Unit**



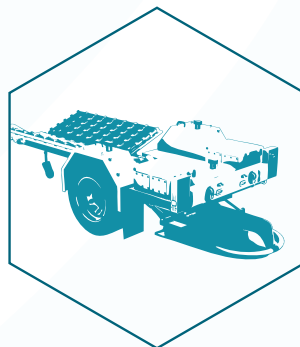
**EOD Vehicle**



**Smoke Generator  
Vehicle**



**Communication  
Vehicle**



**Ground Mine-Layer  
Unit**

## Technical Solutions



We provide technical solutions to enhance the operational efficiency of specialized systems based on specific operational requirements, in addition to integration and alignment solutions that ensure operational efficiency with an integrated approach.



**C B R N e**



**Environmental  
Monitoring Unit**



**Chemical  
Analysis Devices**



**Personal Protection  
Equipment (PPE)**



**Explosive  
Detection  
Devices**



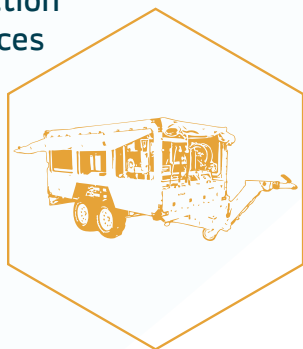
**Biological  
Detection  
Devices**



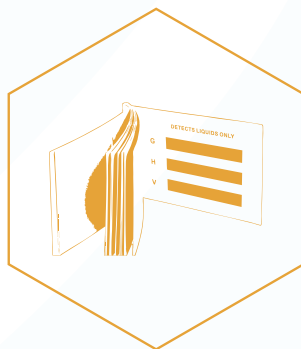
**Radiation  
Detection  
Devices**



**Chemical  
Detection  
Devices**



**Decontamination  
Trailer**



**Individual  
Detection and  
Decontamination  
Equipment**



**Decontamination  
Tents**

## Operational Solutions



We provide solutions that meet the operational requirements of detection, monitoring, reconnaissance, decontamination, and sheltering programs (CBRNe), along with supporting training, operations, and technical support.



**C**



**B**



**R**

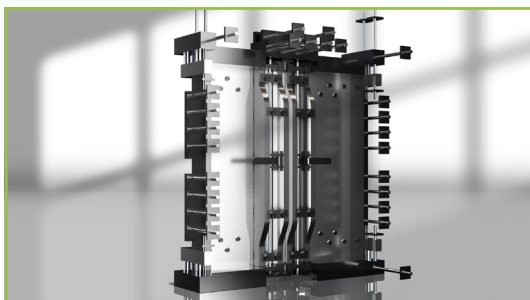


**N**



**e**





### Blast Doors

They are an essential component of any shelter or fortified building, providing advanced protection against blast waves, shrapnel, and toxic gas leakage. These doors are primarily designed to repel air blast waves, and can be hermetically sealed to protect against the ingress of toxic or contaminated materials.



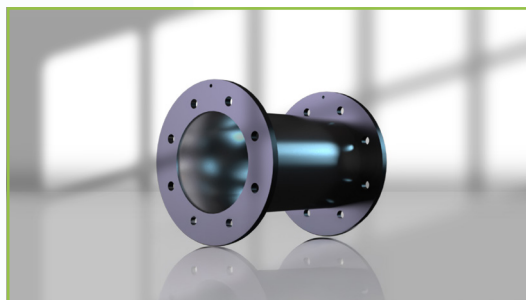
### Blast Valves

Specially designed to protect the interior spaces of shelters and other hardened facilities, ensuring the safety of personnel and equipment from the destructive effects of blast waves. Typically integrated into ventilation or air handling systems, these valves allow free airflow into and out of the protected area, both under normal conditions and during an emergency.



### shut-off valves

Typically installed in ventilation ducts, they are used to control airflow within the duct or to seal it tightly. These valves are capable of operating in hazardous gaseous environments, maintaining a tight seal even under high pressure differentials. These valves are typically installed in ventilation ducts used during peacetime to circulate air to and from shelters.



### Wall Sleeves

Wall sleeves are specially designed pipes embedded in floors, ceilings, concrete walls, or other types of walls, allowing valves or ductwork to be securely attached to the wall. Wall sleeves are typically installed in the early stages of the reinforcement process, then concrete is poured over them to become part of the wall.



### carbon dioxide removal units

The Regenerative Carbon Dioxide Removal System is an advanced system designed to purify the air within closed or fortified environments by continuously and effectively removing carbon dioxide, ensuring that the air remains breathable for extended periods without the need for external ventilation.



### Filtration Systems

Chemical, biological, radiological, and nuclear (CBRN) filtration systems are an essential component of protection against harmful airborne contaminants, such as toxic gases, vapors, and aerosols, that may result from accidents or unconventional attacks. These systems purify the air entering protected areas.

## Industrial Solutions



We provide advanced solutions built on the highest engineering and technical standards to enhance safety, efficiency, and reliability in sensitive and complex military and civilian environments.



**C**



**B**



**R**



**N**



**e**



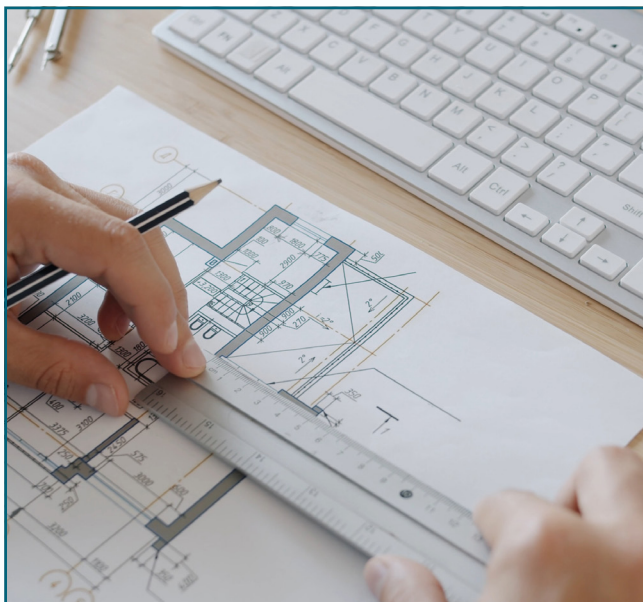
## Research and Development

Research and Development (R&D) is a strategic element aimed at innovating new solutions and technologies while improving existing systems to meet market demands and technological advancements. This process involves exploring innovative ideas.



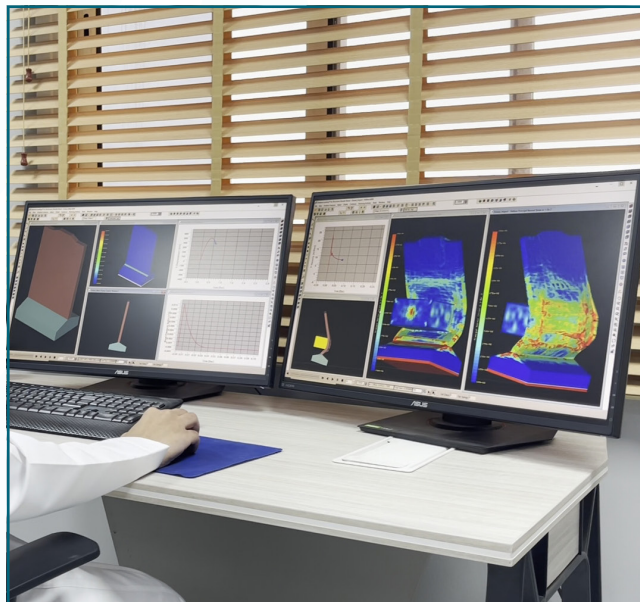
## Studies

The studies represent a fundamental step aimed at analyzing the engineering and technical aspects to ensure that the design aligns with performance and quality requirements. They include the examination of materials, specifications.



## Designs

Designs represent the core phase in transforming ideas into practical engineering solutions. They aim to develop precise models and layouts that reflect project requirements while considering performance, quality, and safety factors. The design process includes studying technical needs, selecting materials.



## Risk analysis

Risk analysis is a systematic process aimed at identifying and evaluating potential factors that could negatively impact project performance, personnel safety, or equipment integrity. It involves studying the sources, likelihood.

## Analysis and Design



We conduct studies and designs to assess the efficiency of modern systems and examine mechanisms for their development in line with evolving usage requirements and advancements in the field of protection.



**C**



**B**



**R**



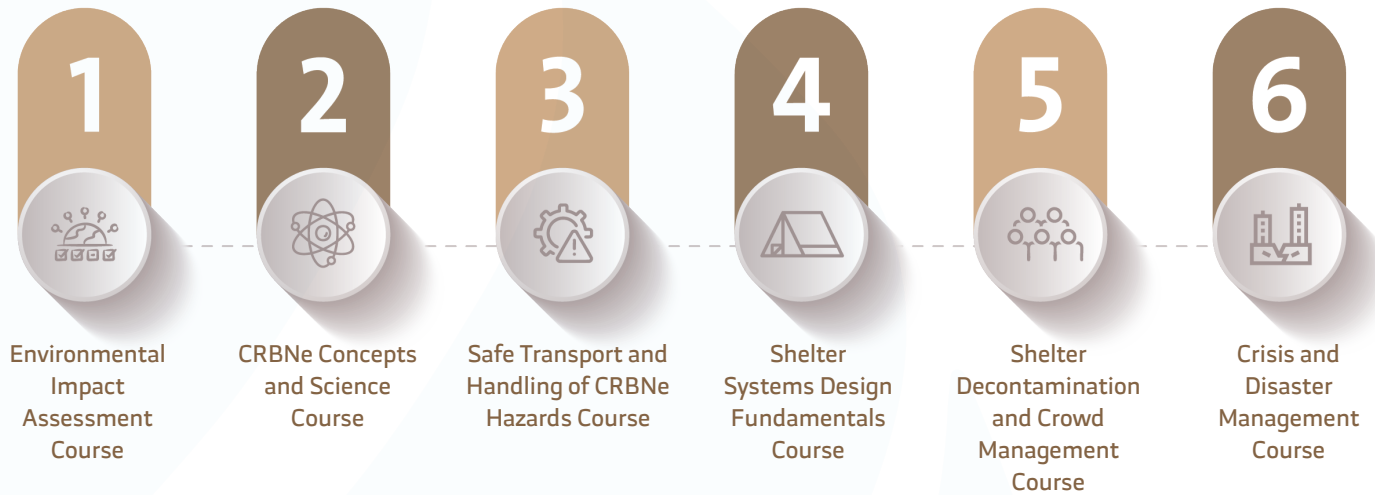
**N**



**e**



## Programs and Training Courses



## External Training Programs



### TRAINING SOLUTIONS



We offer integrated training programs that cover all aspects professionally. We adopt the latest global curricula and technologies and keep pace with developments.



## Testing and calibration

Testing and calibration are essential processes to ensure the accuracy and efficiency of systems and equipment. They involve verifying the performance of technical components against established standards through precise measurements and adjustments, ensuring reliable results and maintaining the highest levels of quality and operational safety.



## Operation and maintenance

Operation and maintenance are key elements in ensuring long-term system performance and efficiency. Operation activities focus on monitoring daily performance and maintaining system readiness, while maintenance aims to prevent failures through regular inspections, repairs, and calibration—ensuring maximum reliability and operational safety.



## Installation and setup

Installation and setup encompass all implementation stages aimed at preparing the site and installing systems and equipment in accordance with approved technical specifications. These activities are carried out with the highest standards of precision and quality to ensure installation safety, operational efficiency, and full system integration for optimal project readiness and reliability.

## Integration and interconnection

Integration and interconnection represent a vital phase aimed at unifying various systems and components within a cohesive operational framework, ensuring seamless data and information exchange across all units. This stage focuses on achieving technical and functional compatibility between systems to ensure synchronized performance, enhanced efficiency, and greater reliability.

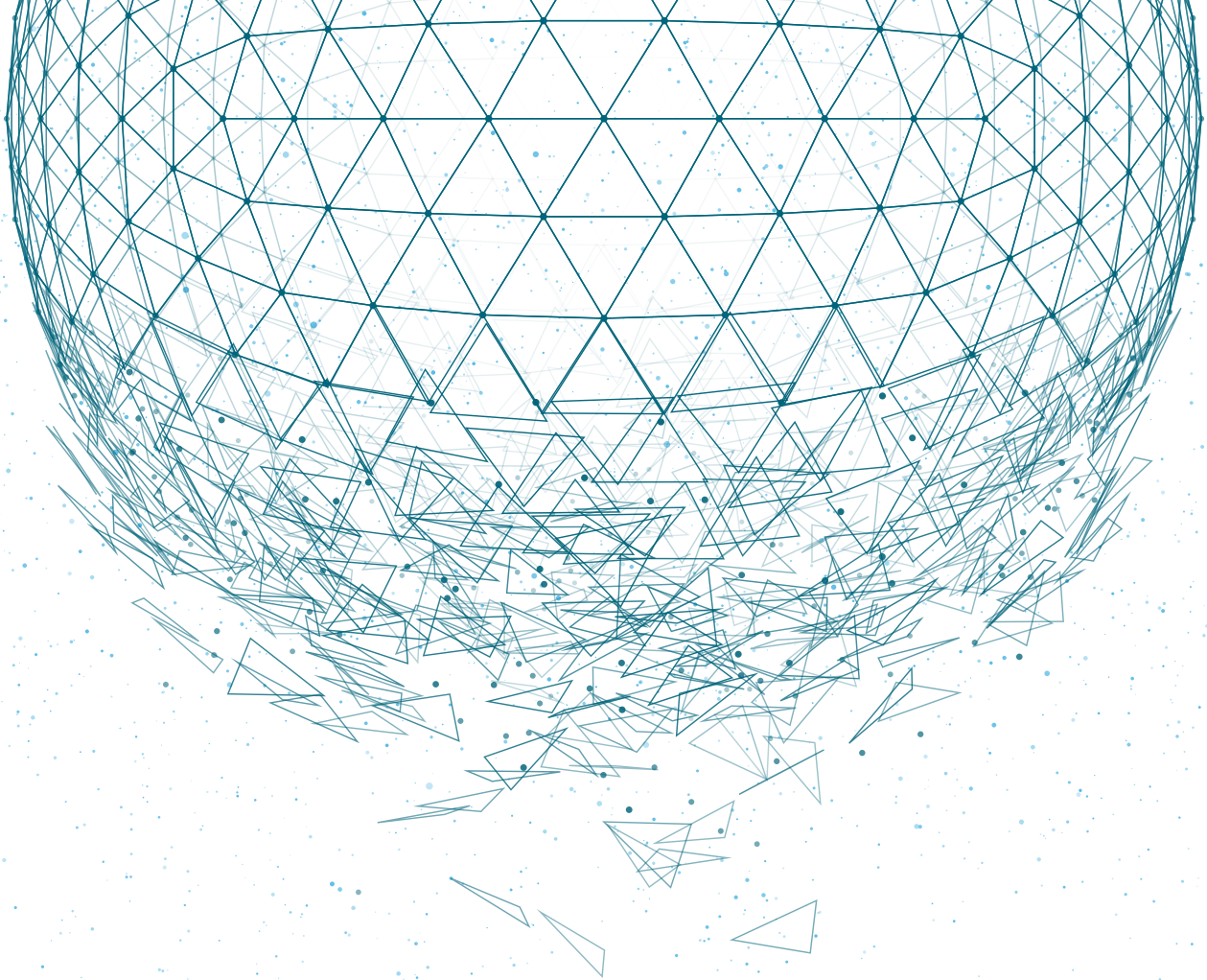
### SERVICES



Through the stages of testing, operation, installation, and integration, we ensure the highest levels of performance and quality by thoroughly inspecting, operating, maintaining, and installing systems.



**C B R N e**



## Contact us

 [www.emaan.com.sa](http://www.emaan.com.sa)

 [info@emaan.com.sa](mailto:info@emaan.com.sa)

 +966 11 23 99 310

 [emaan-company](#)

 [@Emaan\\_company](#)

 +966 11 23 99 841